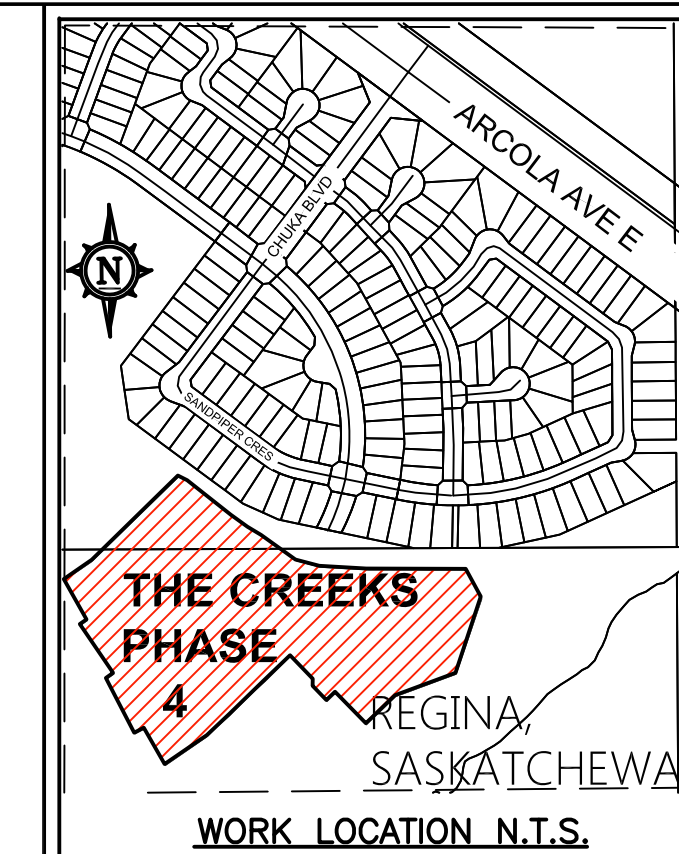


A FULL DRAFTING PACKAGE SHOULD CONSIST OF:

1. A GEOSPATIALLY ACCURATE BASE DRAWING SHOULD BE OBTAINED FROM THE CIVIL CONSULTANT. IT SHOULD BE IN NAD 83 COORDINATES AND IT SHOULD BE SPECIFIED WHETHER IN GROUND OR GRID PROJECTION AND STATE THE MONUMENTS USED AND THE SCALING FACTOR USED.
- THESE STEPS WILL HELP IMPROVE THE GEOSPATIAL RELIABILITY OF ALL UTILITY DRAWINGS . FOR MORE INFORMATION REFER TO THE CSA S250-11 STANDARDS DOCUMENT WHICH COVERS INFORMATION WHICH WILL HELP STANDARDIZE UNDERGROUND DRAWINGS IN UTILITIES AND MUNICIPALITIES THROUGHOUT CANADA.
2. AN EASEMENT DRAWING WHICH WILL SHOW THE LOCATION AND TYPES OF EASEMENTS FOR THE PROJECT.
3. A PLANVIEW LAYOUT WHICH WILL SHOW THE CENTRELINE OF THE UTILITIES TRENCH BOTH ON PUBLIC ROADWAY AND ON THE PROPOSED EASEMENTS. THERE SHOULD BE AMPLE DIMENSIONING OF OFFSETS FROM PROPERTY LINE TO THE TRENCH CENTRELINE.
4. A POWER OVERVIEW SHEET
5. A POWER SCHEMATIC SHEET DETAILING THE PRIMARY AND SECONDARY CONDUCTOR INFORMATION AND CONNECTIONS
6. STREET LIGHT LAYOUT SHOWING SUPPLY CONDUIT PEDESTAL DETAILS AND LIGHTING PROFILES AND DESIGN CRITERIA FOR THE SUBDIVISION STREET LIGHTING INCLUDING THE CONNECTION POINT TO THE ELECTRICAL SYSTEM..
7. SASK ENERGY LAYOUT SHOWING PROPOSED AND EXISTING GAS INFORMATION AS REQUIRED BY THE UTILITY
8. SASK ENERGY LAYOUT STAKER'S COPY (FOR AS-BUILT FIELD NOTES)
9. THE DRAWING SHALL IDENTIFY THE AS-BUILT ACCURACY AS DEFINED BY THE FOLLOWING LEVELS:
  - THE POSITIONAL ACCURACY OF AS-BUILT RECORD ARE TO +-300mm IN X AND Y COORDINATES FOR UNDERGROUND FACILITIES, AND +-100mm IN X,Y, AND Z COORDINATES FOR ABOVE GROUND FACILITIES.

NOTE: A SET OF LAYOUTS SUFFIXED \_ASB ARE INCLUDED FOR THE AS-BUILT DRAWING PRODUCTS



**1-866-828-4888**  
sask1stcall.com

CALL AT LEAST TWO FULL WORKING DAYS BEFORE YOU PLAN TO DIG

SASK 1ST CALL LOGO MUST BE PLACED ON EACH DRAWING

**INDEX OF SHEETS**

- SHEET 1 DESCRIPTION AND INDEX OF SHEETS
- SHEET 2 JOINT EASEMENT PLAN

**SASK POWER**

- SHEET 3 SASK POWER PLAN VIEW 1
- SHEET 4 SASK POWER PLAN VIEW 2
- SHEET 5 SASK POWER ELECTRICAL SCHEMATIC
- SHEET 6 SASK POWER STREET LIGHTING

**SASK ENERGY**

- SHEET 7 SASK ENERGY PLAN VIEW

LEGEND:

EXAMPLE

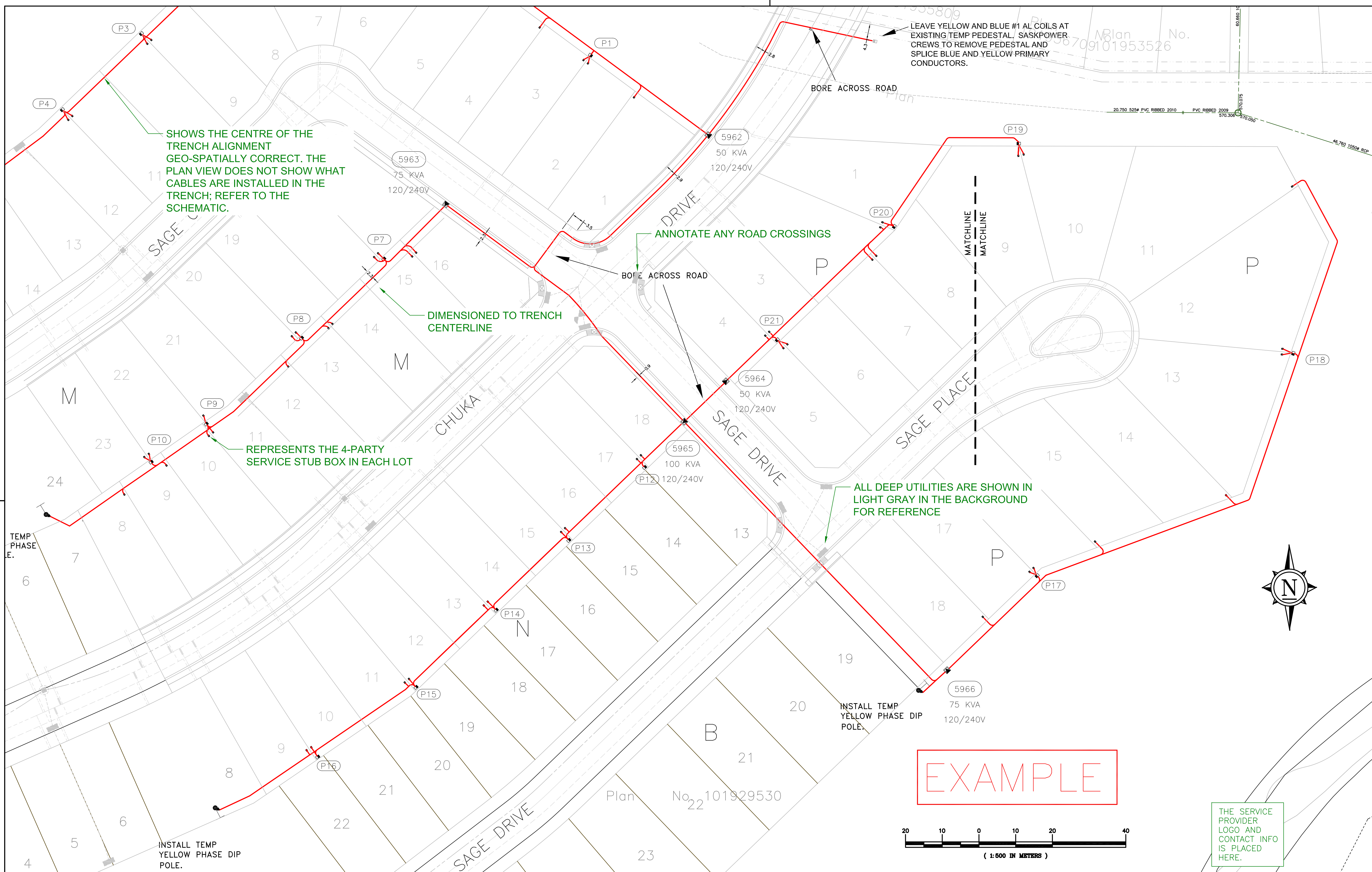
THE SERVICE PROVIDER LOGO AND CONTACT INFO IS PLACED HERE.

**SaskPower**  
---- REGION  
??? DISTRICT OFFICE  
UNDERGROUND DUCT AND STRUCTURES FOR

REF#	DRAWING NUMBER	NO	REMARKS	DATE	DESIGNED	INDEP CHK	DFTG CHK	INSP	REV	ACPT	NO	REMARKS	DATE	DESIGNED	INDEP CHK	DFTG CHK	INSP	REV	ACPT	NO	REGION	DISTRICT	GRID	SERV#	QUOTE#
REFERENCE DRAWINGS																									
REVISIONS																									

APEG-S P.ENG. SEAL GOES HERE





SHOWS THE CENTRE OF THE TRENCH ALIGNMENT GEO-SPATIALLY CORRECT. THE PLAN VIEW DOES NOT SHOW WHAT CABLES ARE INSTALLED IN THE TRENCH; REFER TO THE SCHEMATIC.

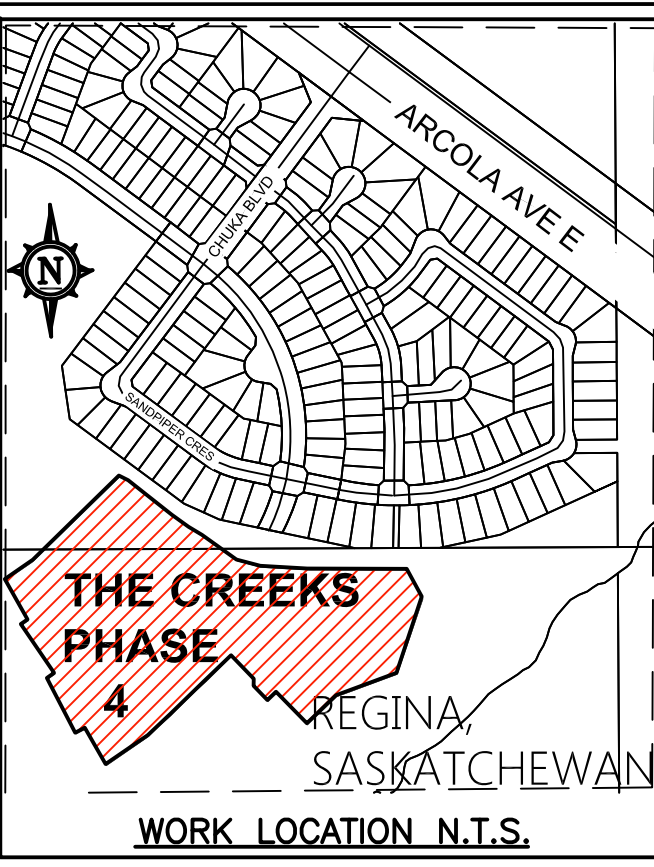
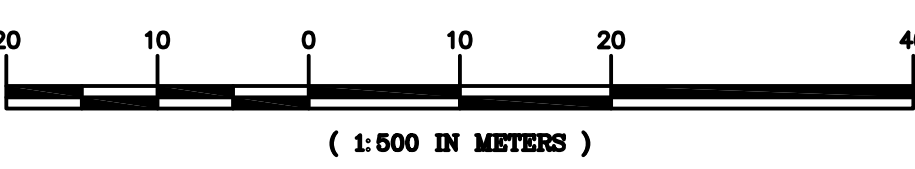
ANNOTATE ANY ROAD CROSSINGS

DIMENSIONED TO TRENCH CENTERLINE

REPRESENTS THE 4-PARTY SERVICE STUB BOX IN EACH LOT

ALL DEEP UTILITIES ARE SHOWN IN LIGHT GRAY IN THE BACKGROUND FOR REFERENCE

EXAMPLE



1-866-828-4888  
sask1stcall.com  
CALL AT LEAST TWO FULL WORKING DAYS BEFORE YOU PLAN TO DIG

**NOTES:**

- SERVICES TO BE INSTALLED IN A 4 PARTY TRENCH WHERE APPLICABLE.
- ALL PADMOUNT TRANSFORMERS ADJACENT TO CURBS/ SIDEWALKS ARE TO BE LOCATED 1.5m BACK OF CURB TO FACE OF TRANSFORMER UNLESS NOTED OTHERWISE.
- DIMENSIONS INDICATE CENTER OF TRENCH. REFER TO APPLICABLE TRENCH STANDARD DETAILS FOR ACTUAL ALIGNMENT WITHIN THE TRENCH. FOR 4 PARTY JOINT USE, REFER TO B-14-66.
- ALL SERVICE CABLE TO BE 1/0 AL UNLESS OTHERWISE NOTED.
- A 2" SPARE DUCT SHALL FOLLOW EACH RUN OF 1X#1AL PRIMARY CONDUCTOR

REFER TO SASKPOWER STANDARDS FOR INSTALLATION:

OF TRENCH, EASEMENT, TRANSFORMER, PEDESTAL AND CABLE MARKER DETAILS

TRENCH ALIGNMENT REFERENCES ARE AS FOLLOWS:

- 4 PARTY SERVICE TRENCH B-14-59
- 4 PARTY MAIN TRENCH B-14-66
- 3 PARTY MAIN TRENCH B-14-(50-70)
- EXCEPTIONS ARE DIMENSIONED AS NOTED

**LEGEND:**

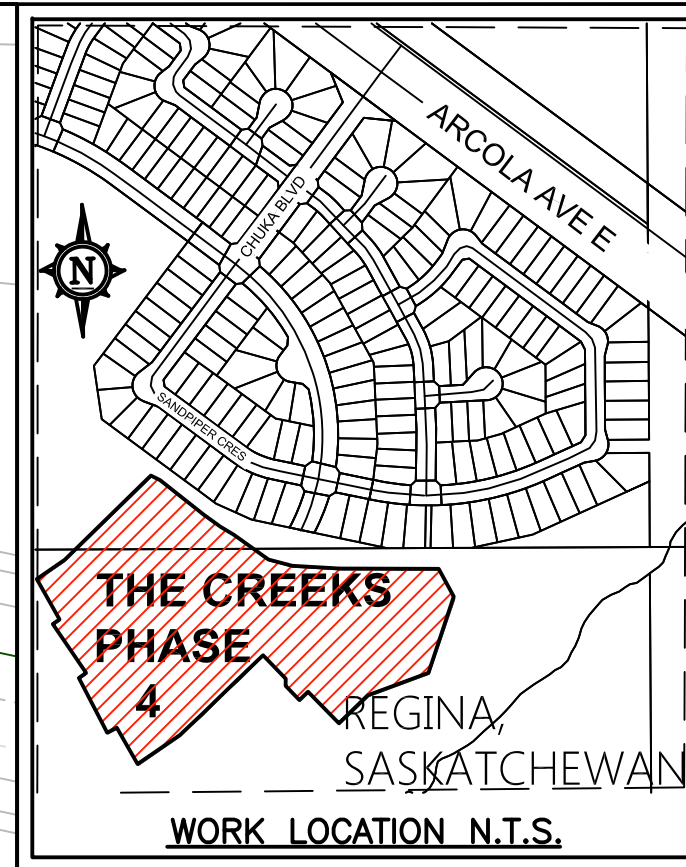
- PEDESTAL
- TRANSFORMER WITH SWITCH
- SECONDARY STUB BOX
- TRENCH CENTER LINE

ABBREVIATIONS	FULL MEANING
1AL	1 ALXLcE
500	500 ALPEL
350	350 ALPEJ
4/0	4/0 ALPEJ
1/0	1/0 ALPEJ
4	4 ALPEJ
-	CABLE MARKER DETAILS

THE SERVICE PROVIDER LOGO AND CONTACT INFO IS PLACED HERE.

PLAN  
1:500

										REGION	DSGN			APEG-S P.ENG. SEAL GOES HERE	<p><b>REGINA</b></p> <p>UNDERGROUND DUCT AND STRUCTURES FOR CREEKS PHASE 4 SERVICE PROVIDER NAME NOTIFICATION NUMBER 2341235321</p>																																																
										DISTRICT	INDEP CHK																																																				
										GRID	DFTG CHK																																																				
										SERV#	INSP																																																				
										QUOTE#	REV																																																				
REF#	DRAWING NUMBER	NO	REMARKS	DATE	DESIGNED	INDEP CHK	DFTG CHK	DFTG CHK	INSP	REV	ACPT	NO	REMARKS	DATE	DESIGNED	INDEP CHK	DFTG CHK	DFTG CHK	INSP	REV	ACPT	NO	REMARKS	DATE	DESIGNED	INDEP CHK	DFTG CHK	DFTG CHK	INSP	REV	ACPT	NO	REMARKS	DATE	DESIGNED	INDEP CHK	DFTG CHK	DFTG CHK	INSP	REV	ACPT	NO	REMARKS	DATE	DESIGNED	INDEP CHK	DFTG CHK	DFTG CHK	INSP	REV	ACPT	NO	REMARKS	DATE	DESIGNED	INDEP CHK	DFTG CHK	DFTG CHK	INSP	REV	ACPT	NO	REMARKS
REFERENCE DRAWINGS		REVISIONS		REVISIONS		REVISIONS		REVISIONS		REVISIONS		REVISIONS		DATE	SCALE	DWG NO	SHEET	OF	SIZE	R																																											
														2012-12-26	1:500	U07-2341234	3	OF	7	D	1																																										



**1-866-828-4888**  
sask1stcall.com  
CALL AT LEAST TWO FULL WORKING DAYS BEFORE YOU PLAN TO DIG

- NOTES:**
- SERVICES TO BE INSTALLED IN A 4 PARTY TRENCH WHERE APPLICABLE.
  - ALL PADMOUNT TRANSFORMERS ADJACENT TO CURBS/ SIDEWALKS ARE TO BE LOCATED 1.5m BACK OF CURB TO FACE OF TRANSFORMER UNLESS NOTED OTHERWISE.
  - DIMENSIONS INDICATE CENTER OF TRENCH. REFER TO APPLICABLE TRENCH STANDARD DETAILS FOR ACTUAL ALIGNMENT WITHIN THE TRENCH. FOR 4 PARTY JOINT USE, REFER TO B-14-66.
  - ALL SERVICE CABLE TO BE 1/0 AL UNLESS OTHERWISE NOTED.
  - A 2" SPARE DUCT SHALL FOLLOW EACH RUN OF 1X#1AL PRIMARY CONDUCTOR

REFER TO SASKPOWER STANDARDS FOR INSTALLATION:

OF TRENCH, EASEMENT, TRANSFORMER, PEDESTAL AND CABLE MARKER DETAILS

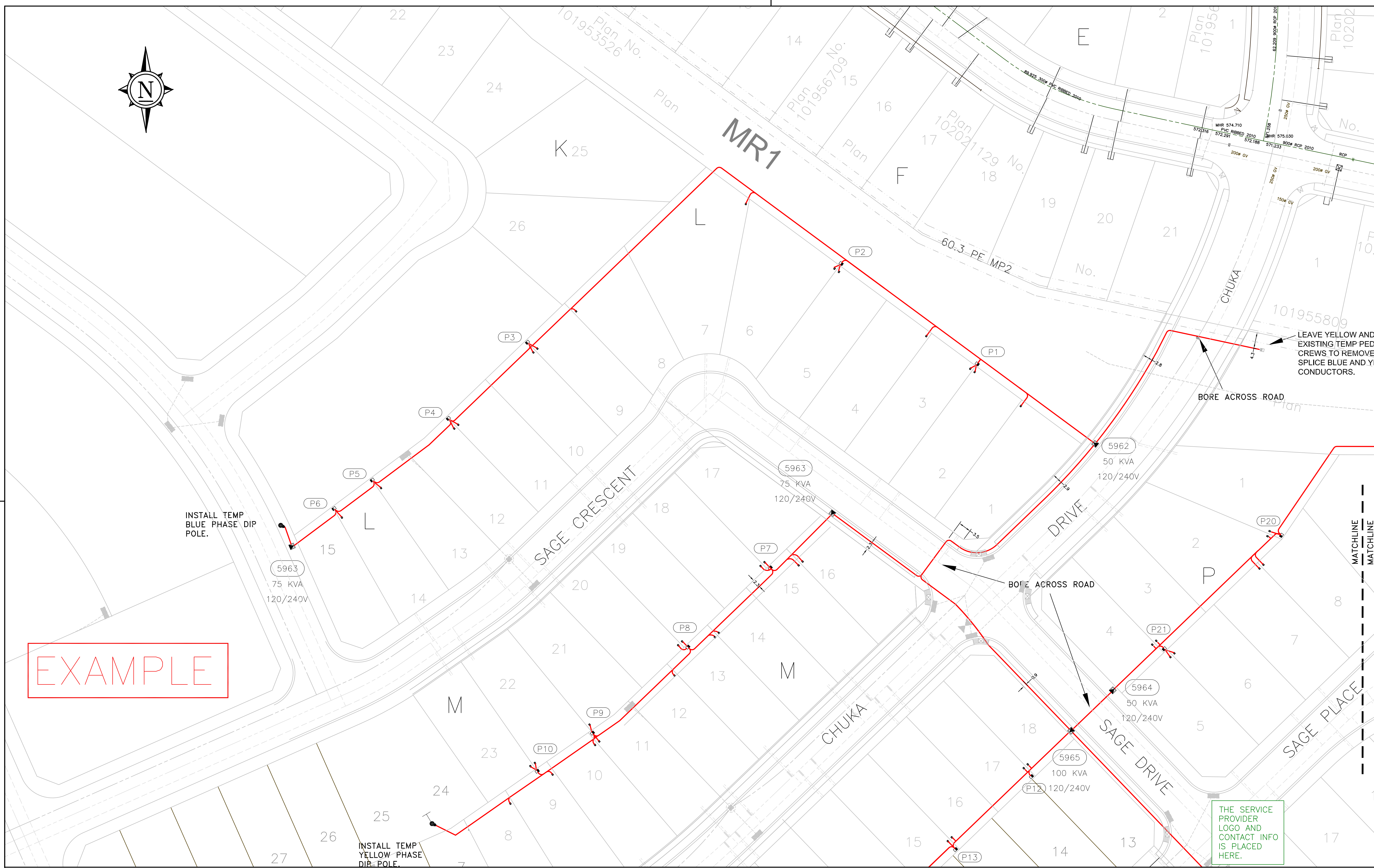
TRENCH ALIGNMENT REFERENCES ARE AS FOLLOWS:

- 4 PARTY SERVICE TRENCH B-14-59
- 4 PARTY MAIN TRENCH B-14-66
- 3 PARTY MAIN TRENCH B-14-(50-70)

-EXCEPTIONS ARE DIMENSIONED AS NOTED

- LEGEND:**
- PEDESTAL
  - TRANSFORMER WITH SWITCH
  - SECONDARY STUB BOX
  - TRENCH CENTER LINE

ABBREVIATIONS	FULL MEANING
1AL	1 ALXLcE
500	500 ALPEL
350	350 ALPEJ
4/0	4/0 ALPEJ
1/0	1/0 ALPEJ
4	4 ALPEJ
-	CABLE MARKER DETAILS

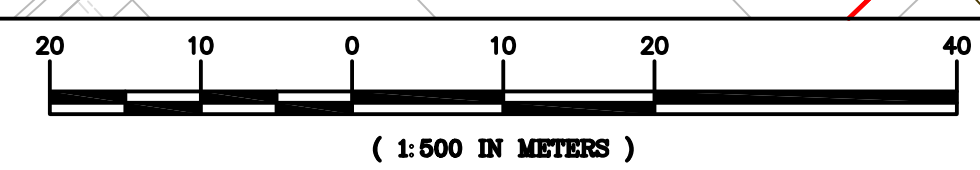


EXAMPLE

INSTALL TEMP BLUE PHASE DIP POLE.

INSTALL TEMP YELLOW PHASE DIR POLE.

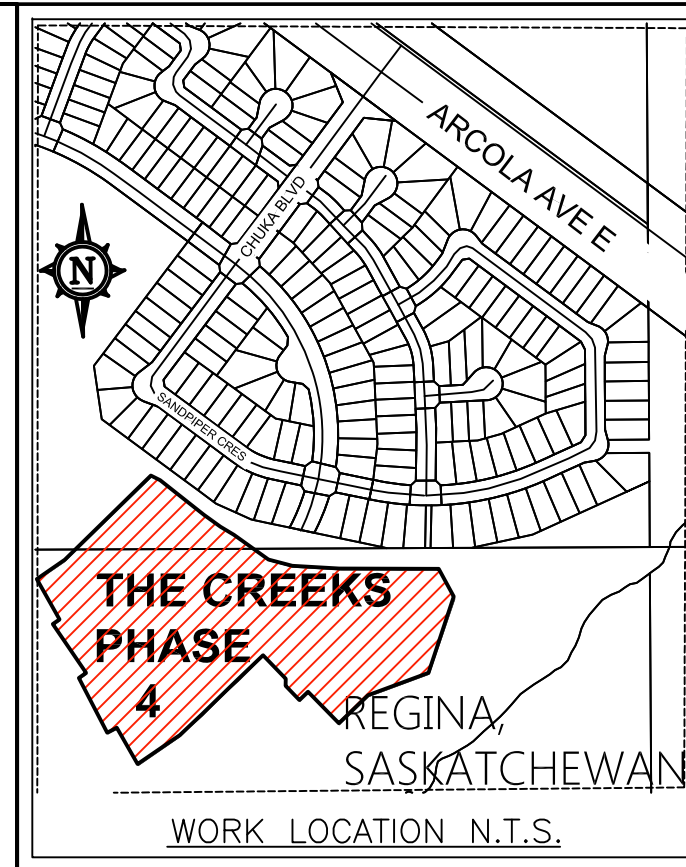
THE SERVICE PROVIDER LOGO AND CONTACT INFO IS PLACED HERE.



PLAN 1:500

REF#	DRAWING NUMBER	NO	REMARKS	DATE	DESIGNED	INDEP CHK	DFTG CHK	INSP	REV	ACPT	NO	REMARKS	DATE	DESIGNED	INDEP CHK	DFTG CHK	INSP	REV	ACPT	NO	
REVISIONS																					

<b>REGINA EAST</b> UNDERGROUND DUCT AND STRUCTURES FOR CREEKS PHASE 4 SERVICE PROVIDER NAME	
APEG-S P.ENG. SEAL GOES HERE	REGION 000 DISTRICT 000 GRID 0 SERV# 000 QUOTE# 000
DATE 2012-12-26 SCALE 1:500 DWG NO U07-2341234	SHEET 4 OF 7 SIZE D R 1



WORK LOCATION N.T.S.

**Sask 1Call**  
 1-866-828-4888  
 sask1stcall.com

CALL AT LEAST TWO FULL WORKING DAYS BEFORE YOU PLAN TO DIG

**NOTES:**

- SERVICES TO BE INSTALLED IN A 4 PARTY TRENCH WHERE APPLICABLE.
- ALL PADMOUNT TRANSFORMERS ADJACENT TO CURBS/ SIDEWALKS ARE TO BE LOCATED 1.5m BACK OF CURB TO FACE OF TRANSFORMER UNLESS NOTED OTHERWISE.

REFER TO SASKPOWER STANDARDS FOR INSTALLATION:

TRENCH ALIGNMENT REFERENCES ARE AS FOLLOWS:

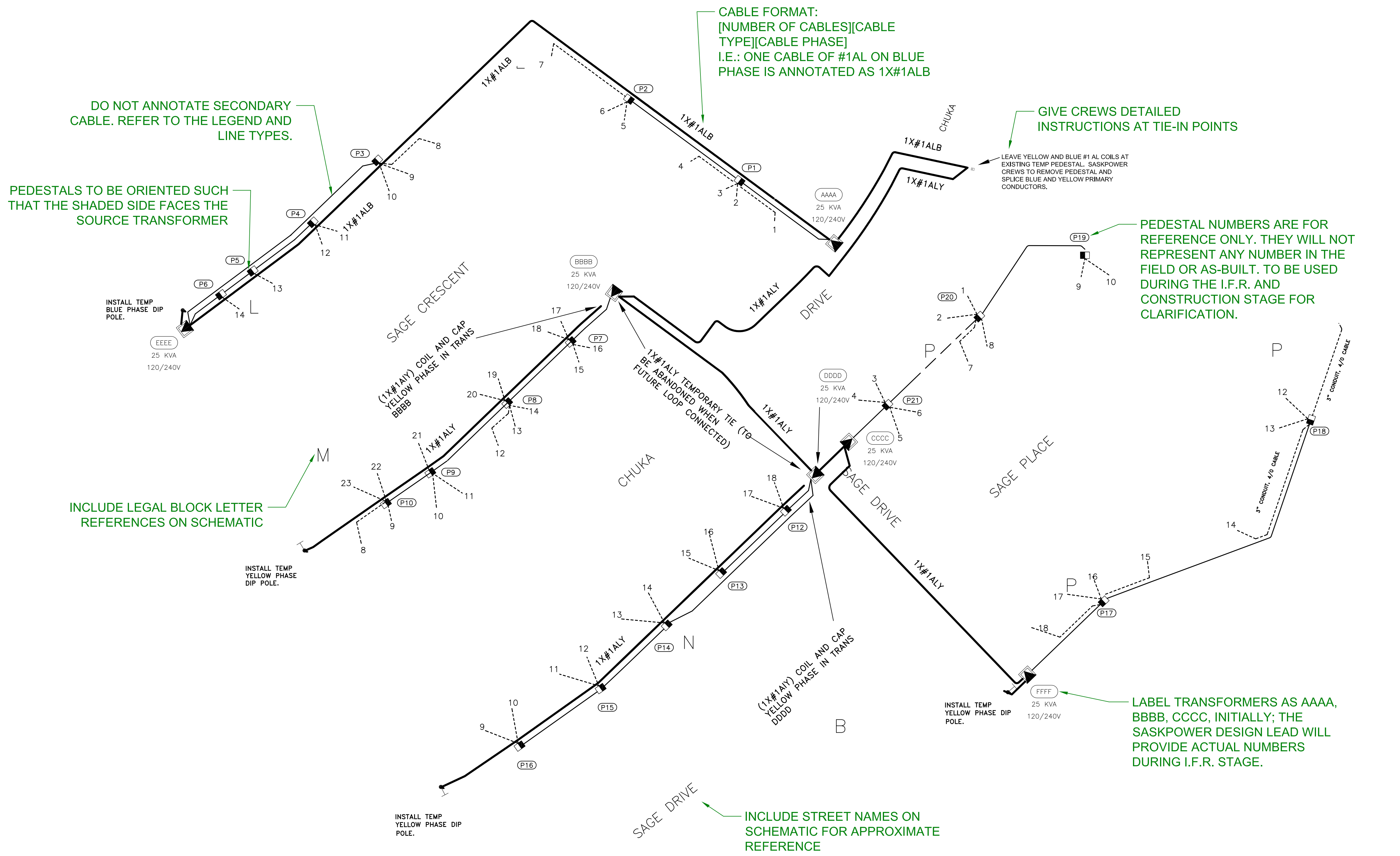
- 4 PARTY SERVICE TRENCH B-14-59
- 4 PARTY MAIN TRENCH B-14-66
- 3 PARTY MAIN TRENCH B-14-(50-70)
- EXCEPTIONS ARE DIMENSIONED AS NOTED

POWER AND COMMUNICATION FACILITIES ARE TO HAVE SEPARATE BORES ACROSS ROADS FROM GAS.

**LEGEND:**

- PEDESTAL
- ⬮ TRANSFORMER WITH SWITCH
- PRIMARY CONDUCTOR (WITH 2" SHADOW DUCT)
- SECONDARY CONDUCTOR 500 ALPEL
- - - 2" SERVICE STUB UNLESS OTHERWISE NOTED

ABBREVIATIONS	FULL MEANING
1AL	1 ALXLcE
500	500 ALPEL
350	350 ALPEJ
4/O	4/O ALPEJ
1/O	1/O ALPEJ
4	4 ALPEJ



EXAMPLE

THE SERVICE PROVIDER LOGO AND CONTACT INFO IS PLACED HERE.

SCHEMATIC N.T.S.  
 SCHEMATIC SHOULD BE NOT TO SCALE (N.T.S.). IT SHOULD NOT BE GEOSPATIALLY PLACED.

INCLUDE STREET NAMES ON SCHEMATIC FOR APPROXIMATE REFERENCE

INCLUDE LEGAL BLOCK LETTER REFERENCES ON SCHEMATIC

PEDESTALS TO BE ORIENTED SUCH THAT THE SHADED SIDE FACES THE SOURCE TRANSFORMER

DO NOT ANNOTATE SECONDARY CABLE. REFER TO THE LEGEND AND LINE TYPES.

CABLE FORMAT: [NUMBER OF CABLES][CABLE TYPE][CABLE PHASE] I.E.: ONE CABLE OF #1AL ON BLUE PHASE IS ANNOTATED AS 1X#1ALB

GIVE CREWS DETAILED INSTRUCTIONS AT TIE-IN POINTS

PEDESTAL NUMBERS ARE FOR REFERENCE ONLY. THEY WILL NOT REPRESENT ANY NUMBER IN THE FIELD OR AS-BUILT. TO BE USED DURING THE I.F.R. AND CONSTRUCTION STAGE FOR CLARIFICATION.

LEAVE YELLOW AND BLUE #1 AL COILS AT EXISTING TEMP PEDESTAL. SASKPOWER CREWS TO REMOVE PEDESTAL AND SPLICE BLUE AND YELLOW PRIMARY CONDUCTORS.

INSTALL TEMP BLUE PHASE DIP POLE.

INSTALL TEMP YELLOW PHASE DIP POLE.

INSTALL TEMP YELLOW PHASE DIP POLE.

INSTALL TEMP YELLOW PHASE DIP POLE.

REF#	DRAWING NUMBER	NO	REMARKS	DATE	DESIGNED	INDEP CHK	DFTG CHK	INSP	REV	ACPT	NO	REMARKS	DATE	DESIGNED	INDEP CHK	DFTG CHK	INSP	REV	ACPT	NO	
REFERENCE DRAWINGS																					
REVISIONS												REVISIONS									

**SaskPower**

REGINA

WORK ORDER NUMBER 123298908

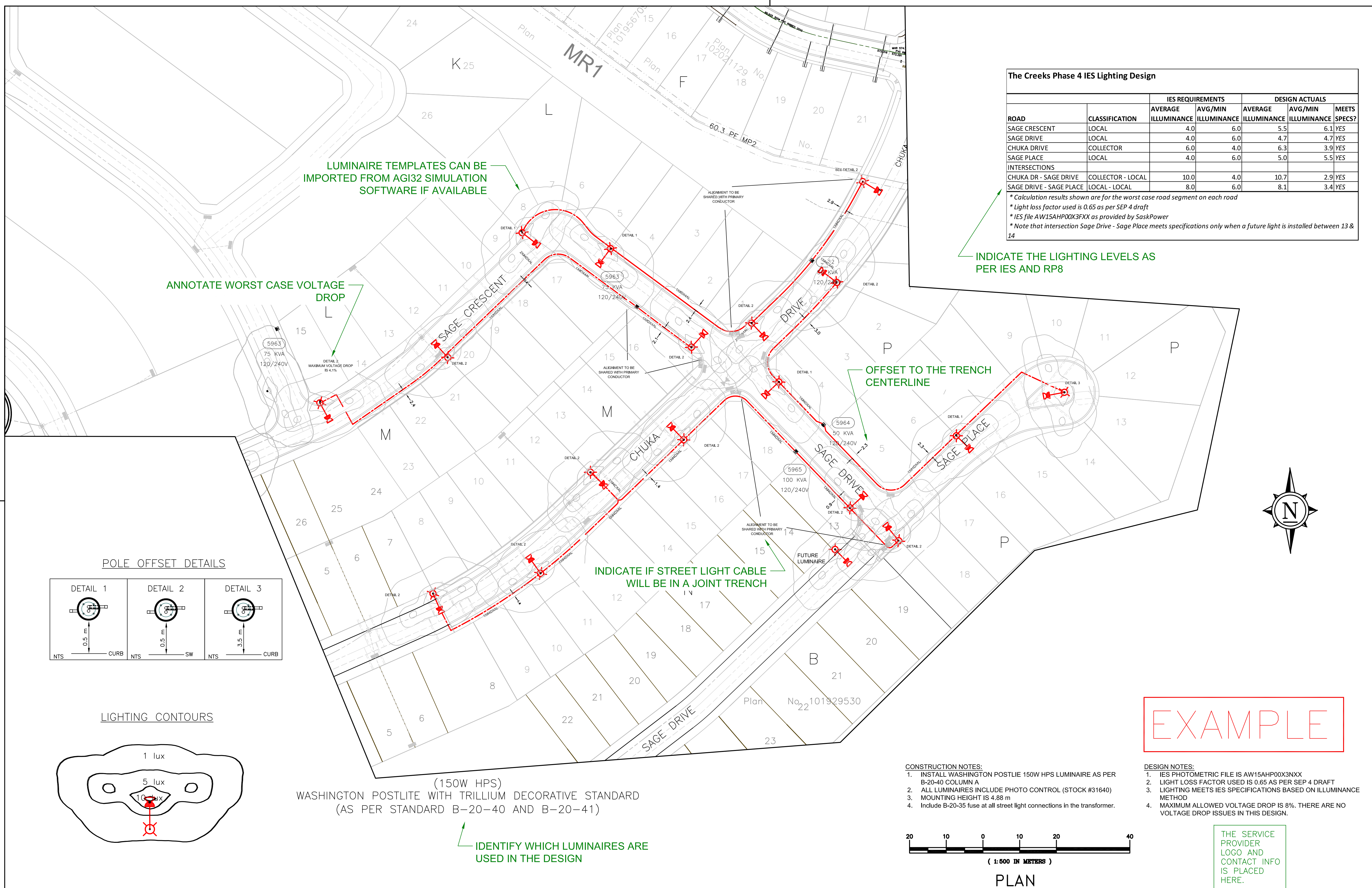
PRIMARY AND SECONDARY SCHEMATIC DIAGRAM

CREEKS PHASE 4

NOTIFICATION NUMBER 12344555

APEG-S  
P.ENG. SEAL GOES HERE

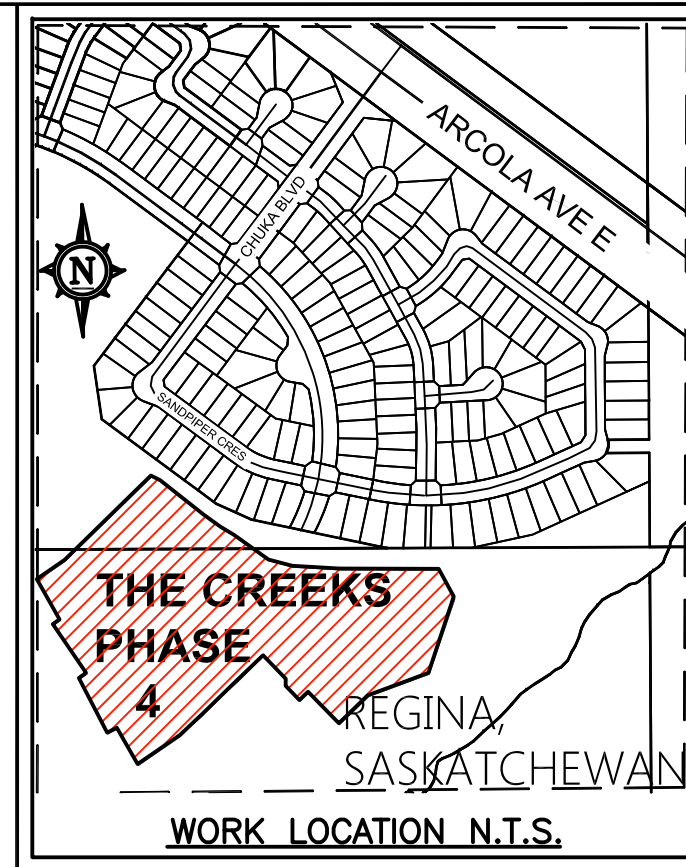
DATE 2012-12-26 SCALE N.T.S. DWG NO U07-2341234 SHEET 5 OF 7 SIZE D R 1



**The Creeks Phase 4 IES Lighting Design**

ROAD	CLASSIFICATION	IES REQUIREMENTS		DESIGN ACTUALS		MEETS?
		AVERAGE ILLUMINANCE	AVG/MIN ILLUMINANCE	AVERAGE ILLUMINANCE	AVG/MIN ILLUMINANCE	
SAGE CRESCENT	LOCAL	4.0	6.0	5.5	6.1	YES
SAGE DRIVE	LOCAL	4.0	6.0	4.7	4.7	YES
CHUKA DRIVE	COLLECTOR	6.0	4.0	6.3	3.9	YES
SAGE PLACE	LOCAL	4.0	6.0	5.0	5.5	YES
<b>INTERSECTIONS</b>						
CHUKA DR - SAGE DRIVE	COLLECTOR - LOCAL	10.0	4.0	10.7	2.9	YES
SAGE DRIVE - SAGE PLACE	LOCAL - LOCAL	8.0	6.0	8.1	3.4	YES

\* Calculation results shown are for the worst case road segment on each road  
 \* Light loss factor used is 0.65 as per SEP 4 draft  
 \* IES file AW15AHP00X3FX as provided by SaskPower  
 \* Note that intersection Sage Drive - Sage Place meets specifications only when a future light is installed between 13 & 14



Sask  
**1st 1Call**  
 1-866-828-4888  
 sask1stcall.com  
 CALL AT LEAST TWO FULL WORKING DAYS BEFORE YOU PLAN TO DIG

- NOTES:**
- SERVICES TO BE INSTALLED IN A 4 PARTY TRENCH WHERE APPLICABLE.
  - ALL PADMOUNT TRANSFORMERS ADJACENT TO CURBS/ SIDEWALKS ARE TO BE LOCATED 1.5m BACK OF CURB TO FACE OF TRANSFORMER UNLESS NOTED OTHERWISE.
  - DIMENSIONS INDICATE CENTER OF TRENCH. REFER TO APPLICABLE TRENCH STANDARD DETAILS FOR ACTUAL ALIGNMENT WITHIN THE TRENCH. FOR 4 PARTY JOINT USE, REFER TO B-14-66.
  - ALL SERVICE CABLE TO BE 1/0 AL UNLESS OTHERWISE NOTED.
  - A 2" SPARE DUCT SHALL FOLLOW EACH RUN OF 1X#1AL PRIMARY CONDUCTOR

REFER TO SASKPOWER STANDARDS FOR INSTALLATION:

OF TRENCH, EASEMENT, TRANSFORMER, PEDESTAL AND CABLE MARKER DETAILS ARE AS FOLLOWS:

- TRENCH ALIGNMENT REFERENCES ARE AS FOLLOWS:
- 4 PARTY SERVICE TRENCH B-14-59
  - 4 PARTY MAIN TRENCH B-14-66
  - 3 PARTY MAIN TRENCH B-14-(50-70)
  - EXCEPTIONS ARE DIMENSIONED AS NOTED

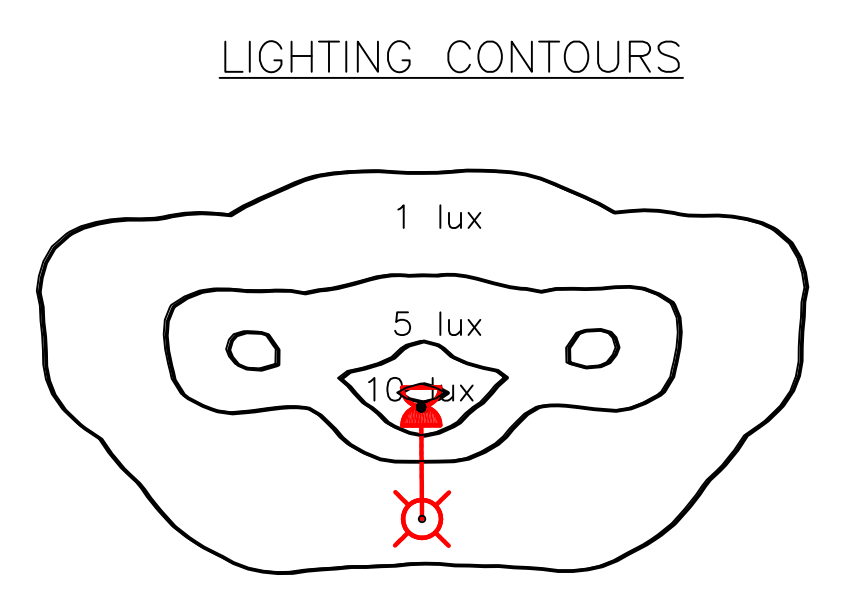
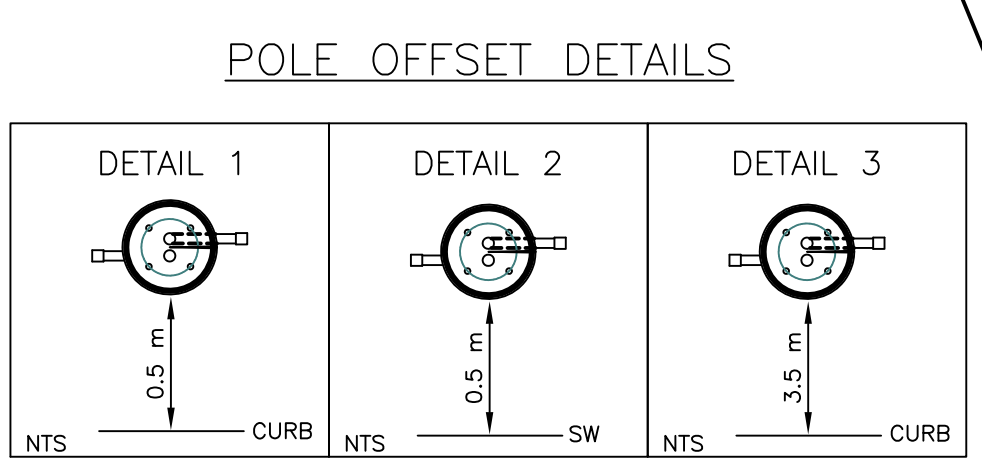
**LEGEND:**

- PEDESTAL
- TRANSFORMER WITH SWITCH
- SECONDARY STUB BOX
- TRENCH CENTER LINE
- 150 WATT POST TOP LUMINAIRES
- DIRECT BURIED UNDERGROUND STREET LIGHT CABLE, SIZE AS NOTED

**ABBREVIATIONS FULL MEANING**

1AL	1 ALXLcE
500	500 ALPEL
350	350 ALPEJ
4/0	4/0 ALPEJ
1/0	1/0 ALPEJ
4	4 ALPEJ

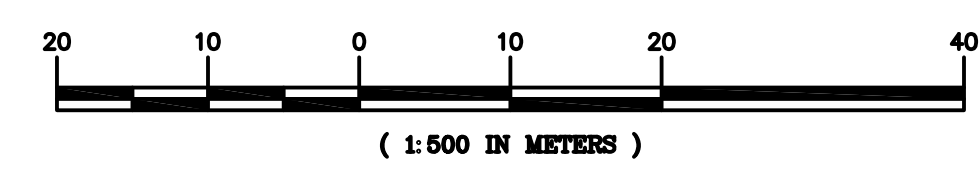
- CABLE MARKER DETAILS



(150W HPS)  
 WASHINGTON POSTLITE WITH TRILLIUM DECORATIVE STANDARD  
 (AS PER STANDARD B-20-40 AND B-20-41)

- CONSTRUCTION NOTES:**
- INSTALL WASHINGTON POSTLIE 150W HPS LUMINAIRE AS PER B-20-40 COLUMN A
  - ALL LUMINAIRES INCLUDE PHOTO CONTROL (STOCK #31640)
  - MOUNTING HEIGHT IS 4.88 m
  - Include B-20-35 fuse at all street light connections in the transformer.

- DESIGN NOTES:**
- IES PHOTOMETRIC FILE IS AW15AHP00X3NXX
  - LIGHT LOSS FACTOR USED IS 0.65 AS PER SEP 4 DRAFT
  - LIGHTING MEETS IES SPECIFICATIONS BASED ON ILLUMINANCE METHOD
  - MAXIMUM ALLOWED VOLTAGE DROP IS 8%. THERE ARE NO VOLTAGE DROP ISSUES IN THIS DESIGN.

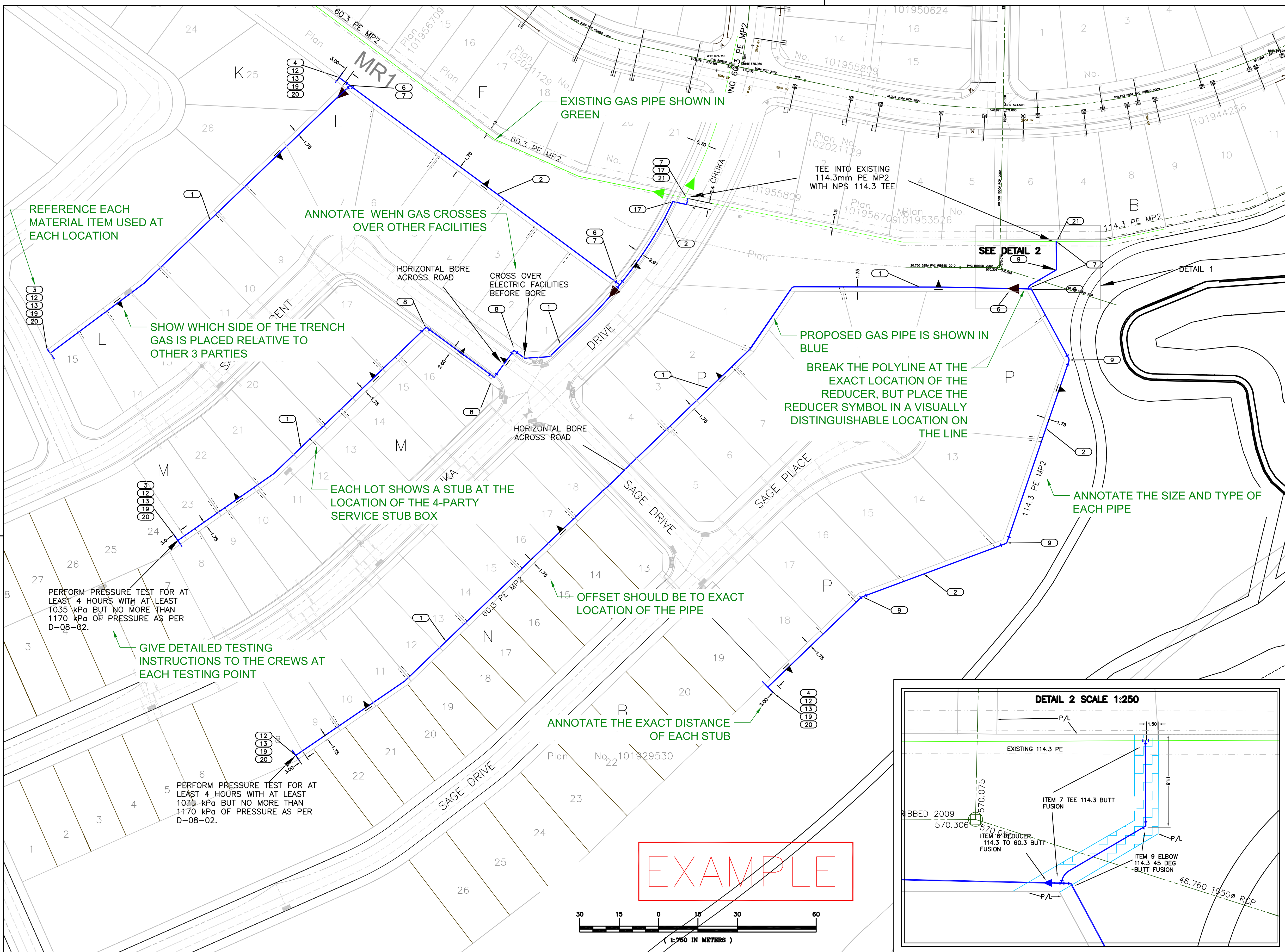


THE SERVICE PROVIDER LOGO AND CONTACT INFO IS PLACED HERE.

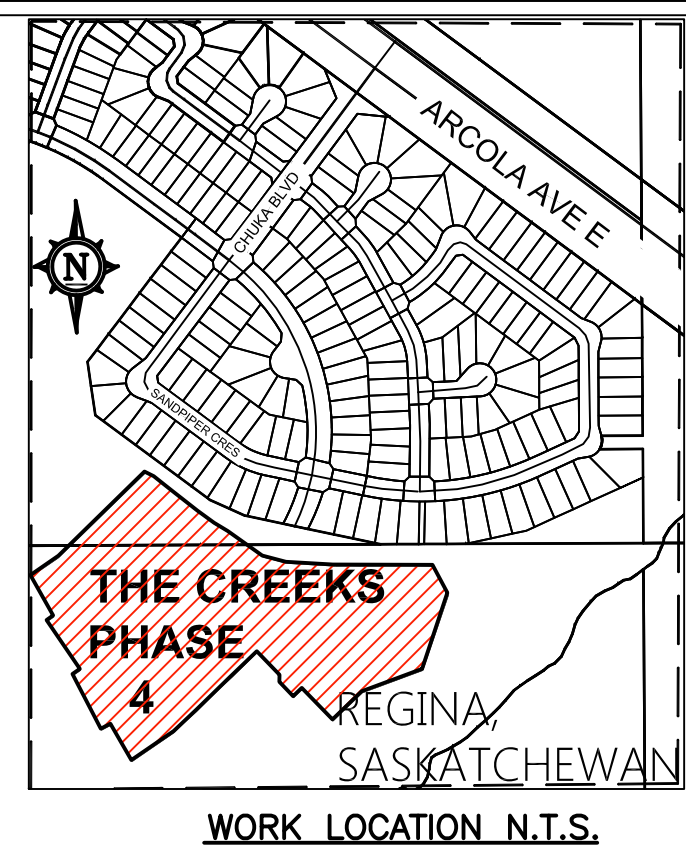
															REGION		INDEP CHK																			
															DISTRICT	000	DFTG CHK																			
															GRID	0	DFTG CHK																			
															SERV#	000	INSP																			
															QUOTE#	000	REV																			
																	ACPT																			
REF#	DRAWING NUMBER	NO	REMARKS	DATE	DESIGNED	INDEP CHK	DFTG CHK	DFTG CHK	INSP	REV	ACPT	NO	REMARKS	DATE	DESIGNED	INDEP CHK	DFTG CHK	DFTG CHK	INSP	REV	ACPT	NO	REMARKS	DATE	DESIGNED	INDEP CHK	DFTG CHK	DFTG CHK	INSP	REV	ACPT					
REFERENCE DRAWINGS		REVISIONS		REVISIONS		REVISIONS		REVISIONS		REVISIONS		REVISIONS		REVISIONS		REVISIONS		REVISIONS		REVISIONS		REVISIONS		REVISIONS		REVISIONS		REVISIONS		REVISIONS						
															DATE	2012-12-26	SCALE	1:750	DWG NO	U07-2341234	SHEET	6 OF 7	SIZE	D	R	1										

**SaskPower**

**REGINA EAST**  
 STREET LIGHTING  
 SUBDIVISION NAME  
 SERVICE PROVIDER NAME



**Sask 1Call**  
 1-866-828-4888  
 sask1call.com  
 CALL AT LEAST TWO FULL WORKING DAYS BEFORE YOU PLAN TO DIG



ITEM	MATERIAL CODE	DESCRIPTION	QUANTITY	ACTUALS
1	01090032	PE NPS 2 60.3 OD X 5.5 WT 900M/REEL	800	
2	01090040	PE NPS 4 114.3 OD X 10.4 WT 270M/REEL	450	
3	02091535	CAP - NPS 2" - BUTT FUSION PE 2306 CSA B137.4	3	
4	02091540	CAP - NPS 4" - BUTT FUSION PE 2306 CSA B137.4	2	
6	2096638	REDUCER - NPS 4 X NPS 2 BUTT FUSION - PE	3	
7	02097490	TEE - 4" NPS - SDR11 - BUTT FUSION	3	
8	02098232	ELBOW - NPS 2" - 90 DEG BUTT FUSION - PE 2306 -	3	
9	02098445	ELBOW - NPS 4" - 45 DEG BUTT FUSION - PE 2306 -	5	
10	04190514	WIRE-#14 SMALL REEL (300 mtrs) COPPER WITH 2/64 PVC	1500	
11	04190520	SLEEVE-CU-1/4" DIA. X 1" LONG USED TO CRIMP	100	
12	04190700	GAS LINE MARKER BALL YELLOW, 83.0 kHz	5	
13	05537125	POST-SIGN-SEI CHANNEL (1 1/2" X 8") - 3.81 Metal	5	
14	02091408	CAP-CTS 1/2" - SOCKET FUSION - PE 2306 SDR 7 -	60	
15	01090008	PE NPS 1/2 15.9 OD X 2.3 WT 300M/COIL ON PALLETS POLY WRAP	132	
16	02087472	TEE - NPS 2 X NPS 1/2 - SERVICE CLAMP-ON ELIMINATOR	60	
17	02098240	ELBOW - NPS 4" - 90 DEG BUTT FUSION - PE 2306 -	2	
18	05058636	BOLT-HEX HEAD-3/8 X 2" CADMIUM PLATED C/W NUT ROUND WASHER	10	
19	02094940	COUPLING - REPAIR - NPS 4" - SDR 11 PE - DRESSER	0	
20	5643003	SIGN-DANGER FOR URBAN HIGH PRESSURE NATURAL	5	
21	2099040	COUPLING 4" IPS PART NUMBER 89 000400	1	

- LEGEND**
- PROPOSED MAIN TRENCH SEE SASKPOWER B-14-66
  - EXISTING GAS
  - MATERIAL CODES
  - OFFSETS INDICATE TO LINE OF PIPE
  - REDUCER
  - CAP
- TYPES OF CONNECTIONS**
- TEE-USED DURING ORIGINAL INSTALLATION
  - ELBOW-90° OR 45° FITTING
  - DENOTES ORIENTATION OF GAS ALIGNMENT RELATIVE TO SHARED PARTIES

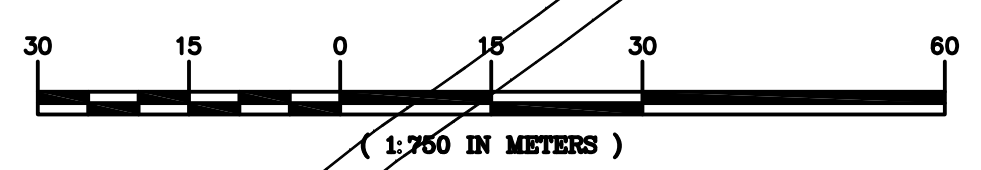
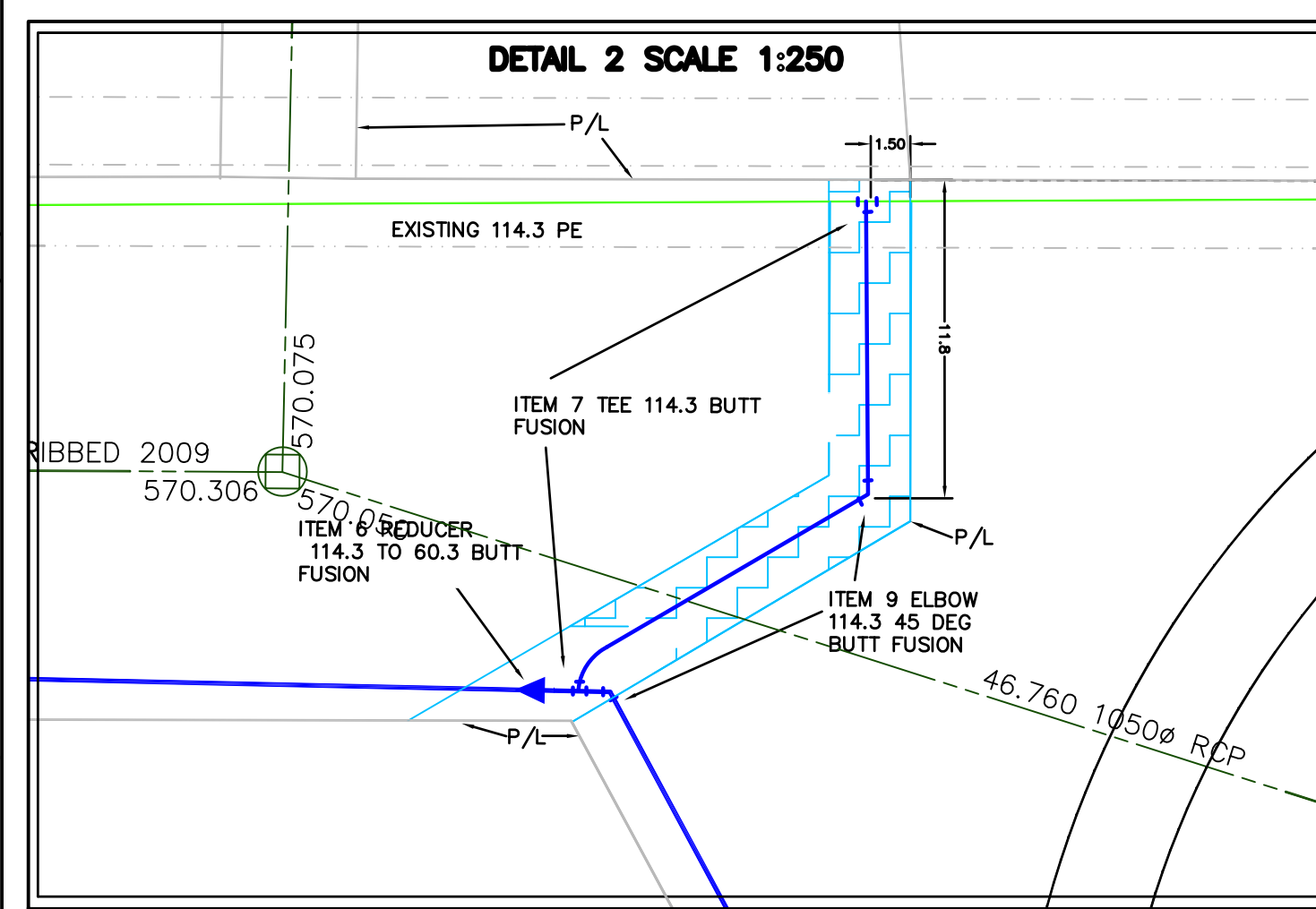
**PRESSURE TESTING REQUIREMENTS**

- TEST PRESSURE REQUIREMENTS:  
 THE SYSTEM SHALL BE TESTED WITH AIR OR NITROGEN AND COMPLY WITH SASKENERGY SPI D-08-02.2
- TEST RECORDS AND REPORTS TO BE COMPLETED IN ACCORDANCE WITH SASKENERGY SPI D-08-03.1 D-08-03.2 AND FORWARDED TO SERVICE PROVIDER ENGINEERING.
- MODIFICATIONS TO ABOVE ONLY WITH WRITTEN AUTHORIZATION OF THE SERVICE PROVIDER ENGINEERING.

**NOTES:**

- DIMENSIONS INDICATE CENTER OF PIPE. REFER TO APPLICABLE TRENCH STANDARD DETAILS FOR ACTUAL ALIGNMENT WITHIN THE TRENCH. FOR 4 PARTY JOINT USE, REFER TO SASKPOWER B-14-66.

THE SERVICE PROVIDER LOGO AND CONTACT INFO IS PLACED HERE.



EXAMPLE

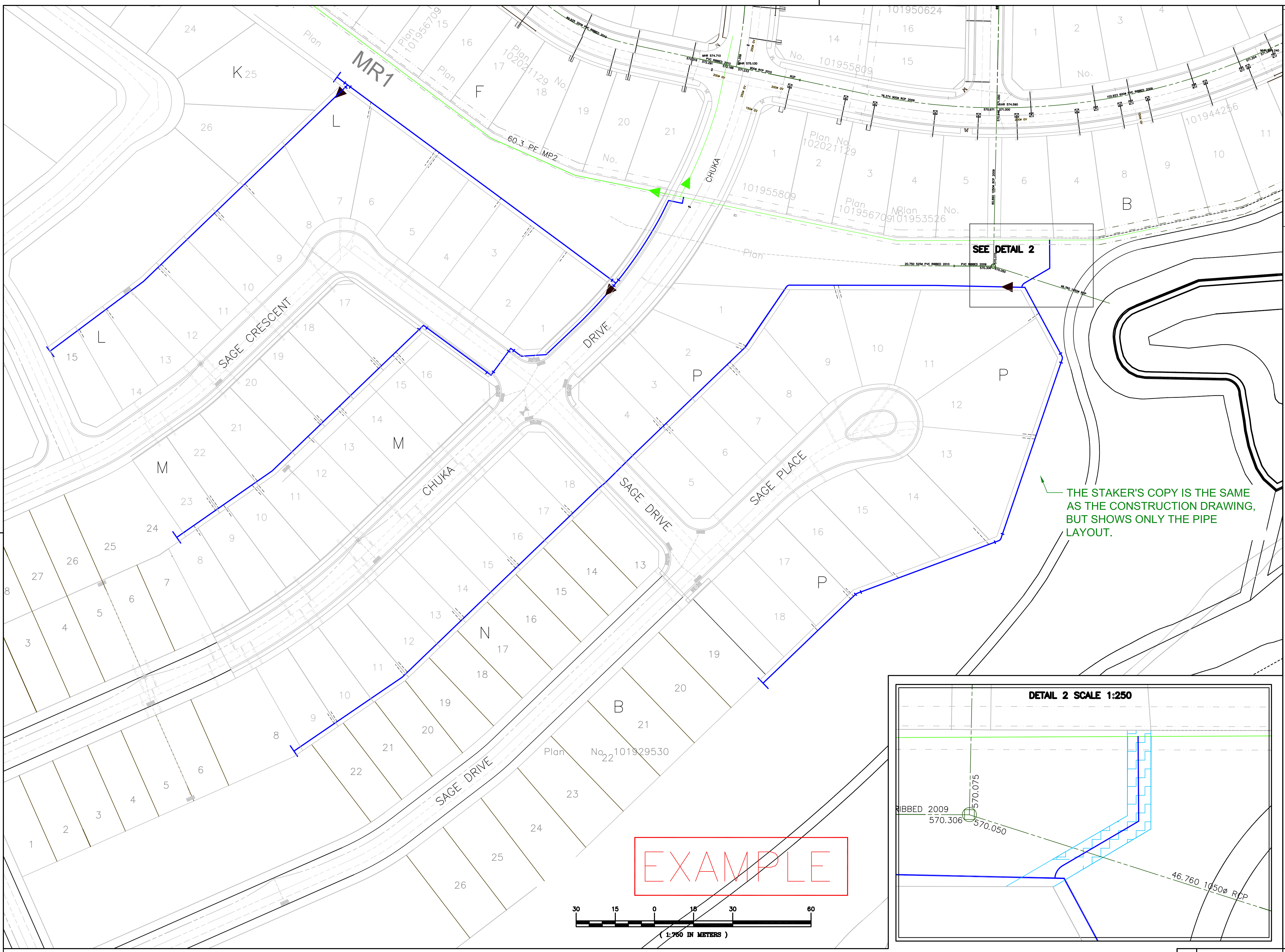
REF#	DRAWING NUMBER	NO	REMARKS	DATE	DESIGNED	INDEP CHK	DFTG CHK	INSP	REV	ACPT	NO	REMARKS	DATE	DESIGNED	INDEP CHK	DFTG CHK	INSP	REV	ACPT	NO	
		10									5										
		9									4										
		8									3										
		7									2										
		6									1	ADDED ITEM NUMBER 10									

**SaskEnergy**

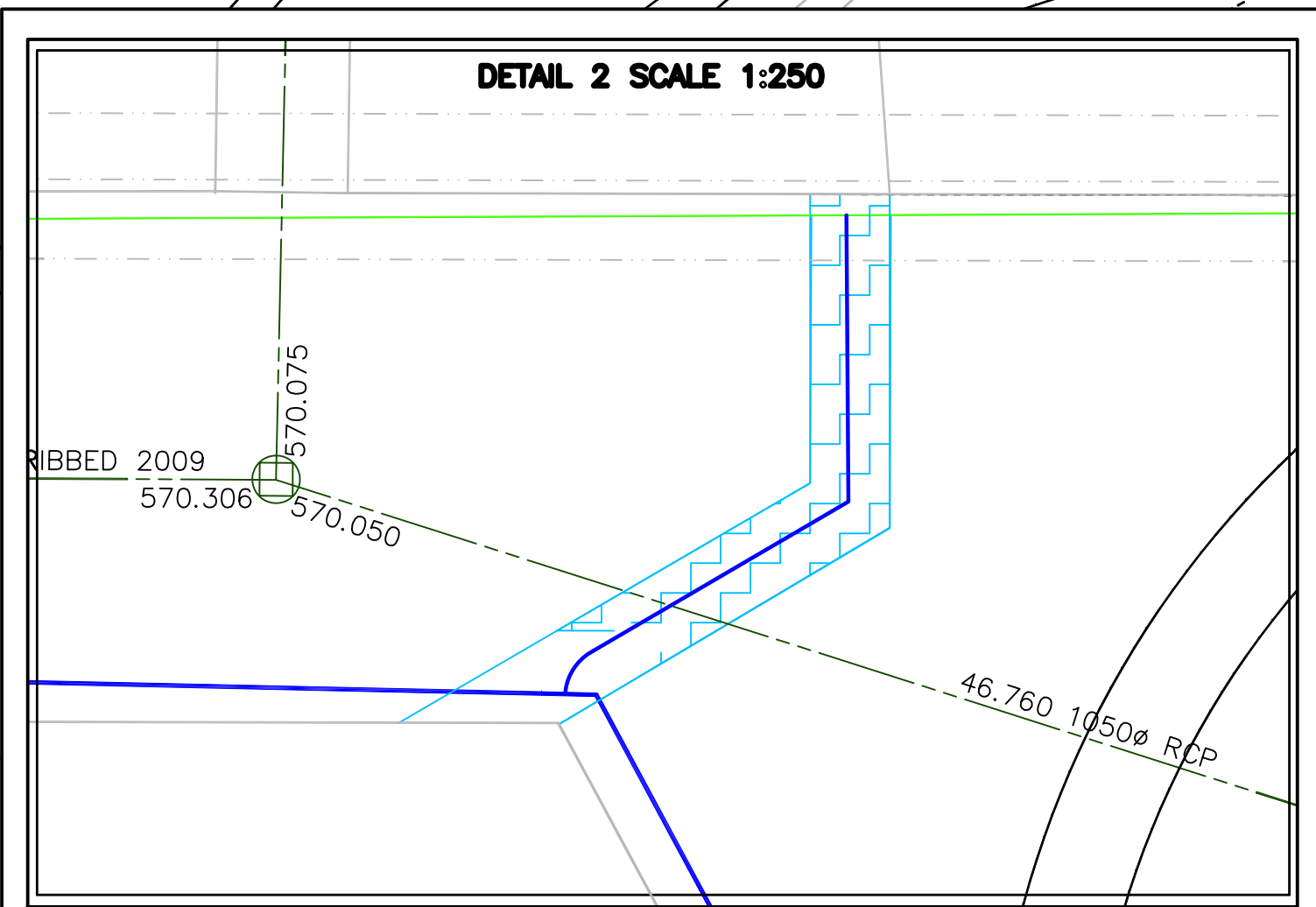
REGINA EAST  
 UNDERGROUND DUCT AND STRUCTURES FOR SUBDIVISION NAME  
 SERVICE PROVIDER NAME

APEG-S  
 P.ENG. SEAL GOES HERE

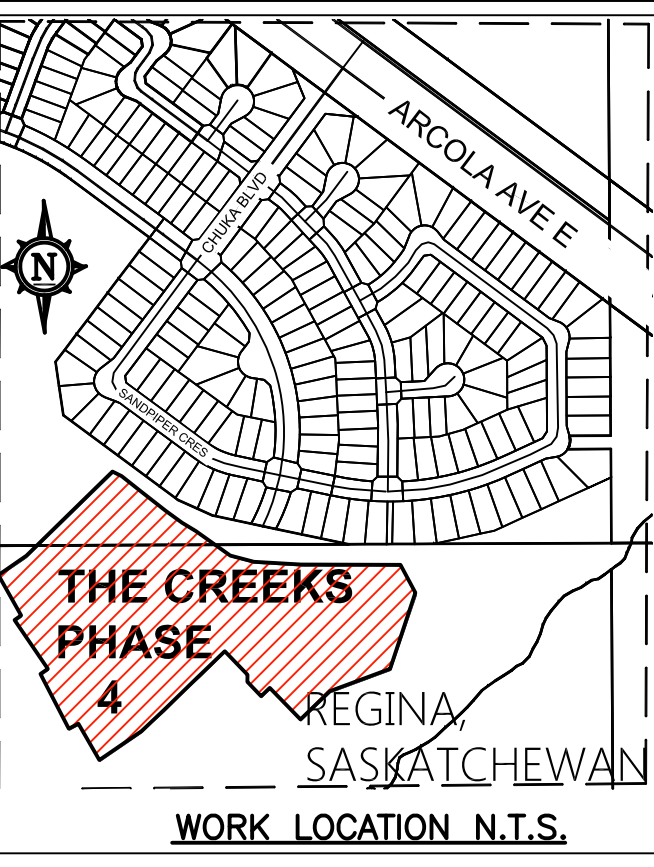
DATE 2012-11-26 SCALE 1:750 DWG NO E07-12312988 SHEET 7 OF 7 SIZE D R 1



EXAMPLE



CALL AT LEAST TWO FULL WORKING DAYS BEFORE YOU PLAN TO DIG



ITEM	MATERIAL CODE	DESCRIPTION	QUANTITY	ACTUALS
1	01090032	PE NPS 2 60.3 OD X 5.5 WT 900M/REEL	800	
2	01090040	PE NPS 4 114.3 OD X 10.4 WT 270M/REEL	450	
3	02091535	CAP - NPS 2" - BUTT FUSION PE 2306 CSA B137.4	3	
4	02091540	CAP - NPS 4" - BUTT FUSION PE2306 CSA B137.4	2	
6	2096638	REDUCER - NPS 4 X NPS 2 BUTT FUSION - PE	3	
7	02097490	TEE - 4" NPS - SDR11 - BUTT FUSION	3	
8	02098232	ELBOW - NPS 2" - 90 DEG BUTT FUSION - PE 2306 -	3	
9	02098445	ELBOW - NPS 4" - 45 DEG BUTT FUSION - PE 2306 -	5	
10	04190514	WIRE - #14 SMALL REEL (300 mtrs) COPPER WITH 2/64 PVC	1500	
11	04190520	SLEEVE - CU-1/4" DIA. X 1" LONG USED TO CRIMP	100	
12	04190700	GAS LINE MARKER BALL YELLOW, 83.0 kHz	5	
13	05537125	POST-SIGN-SEI CHANNEL (1 1/2" X 8') - 3.81 Metal	5	
14	02091408	CAP - CTS 1/2" - SOCKET FUSION - PE 2306 SDR 7 -	60	
15	01090008	PE NPS 1/2 15.9 OD X 2.3 WT 300M/COIL ON PALLETS POLY WRAP	132	
16	02087472	TEE - NPS 2 X NPS 1/2 - SERVICE CLAMP-ON ELIMINATOR	60	
17	02098240	ELBOW - NPS 4" - 90 DEG BUTT FUSION - PE 2306 -	2	
18	05058636	BOLT-HEX HEAD-3/8 X 2" CADMIUMPLATED C/W NUT ROUND WASHER	10	
19	02094940	COUPLING - REPAIR - NPS 4" - SDR 11 PE - DRESSER	0	
20	5643003	SIGN-DANGER FOR URBAN HIGH PRESSURE NATURAL	5	
21	2099040	COUPLING 4" IPS PART NUMBER 89 000400	1	

**LEGEND**

- PROPOSED MAIN TRENCH SEE SASKPOWER B-14-66
- EXISTING GAS
- 9 MATERIAL CODES
- 20' — OFFSETS INDICATE TO LINE OF PIPE
- ▶ REDUCER
- T CAP
- TYPES OF CONNECTIONS**
- + TEE—USED DURING ORIGINAL INSTALLATION
- └ ELBOW—90° OR 45° FITTING
- ▲ DENOTES ORIENTATION OF GAS ALIGNMENT RELATIVE TO SHARED PARTIES

**PRESSURE TESTING REQUIREMENTS**

1. TEST PRESSURE REQUIREMENTS:  
THE SYSTEM SHALL BE TESTED WITH AIR OR NITROGEN AND COMPLY WITH SASKENERGY SPI D-08-02.2
2. TEST RECORDS AND REPORTS TO BE COMPLETED IN ACCORDANCE WITH SASKENERGY SPI D-08-03.1 D-08-03.2 AND FORWARDED TO SERVICE PROVIDER ENGINEERING.
3. MODIFICATIONS TO ABOVE ONLY WITH WRITTEN AUTHORIZATION OF THE SERVICE PROVIDER ENGINEERING.

**NOTES:**

1. DIMENSIONS INDICATE CENTER OF PIPE. REFER TO APPLICABLE TRENCH STANDARD DETAILS FOR ACTUAL ALIGNMENT WITHIN THE TRENCH. FOR 4 PARTY JOINT USE, REFER TO SASKPOWER STANDARD B-14-66.
  2. CLAMPS MUST BE SUPPORTED WHEN SQUEEZING.
- THIS STANDARD PROVIDER CONTACT INFO IS PLACED HERE.

REF#	DRAWING NUMBER	NO	REMARKS	DATE	DESIGNED	INDEP CHK	DFTG CHK	INSP	REV	ACPT	NO	REMARKS	DATE	DESIGNED	INDEP CHK	DFTG CHK	INSP	REV	ACPT	NO	REMARKS	
		10									5										1	ADDED ITEM NUMBER 10
		9									4										4	
		8									3										3	
		7									2										2	
		6									1										1	

**SaskEnergy**

**REGINA**  
EAST  
UNDERGROUND DUCT AND STRUCTURES FOR  
SUBDIVISION NAME  
SERVICE PROVIDER NAME

APEG-S  
P.ENG. SEAL  
GOES HERE

DATE	SCALE	DWG NO	SHEET	OF	SIZE	R
2012-11-26	1:750	E07-12312988	7	7	D	1