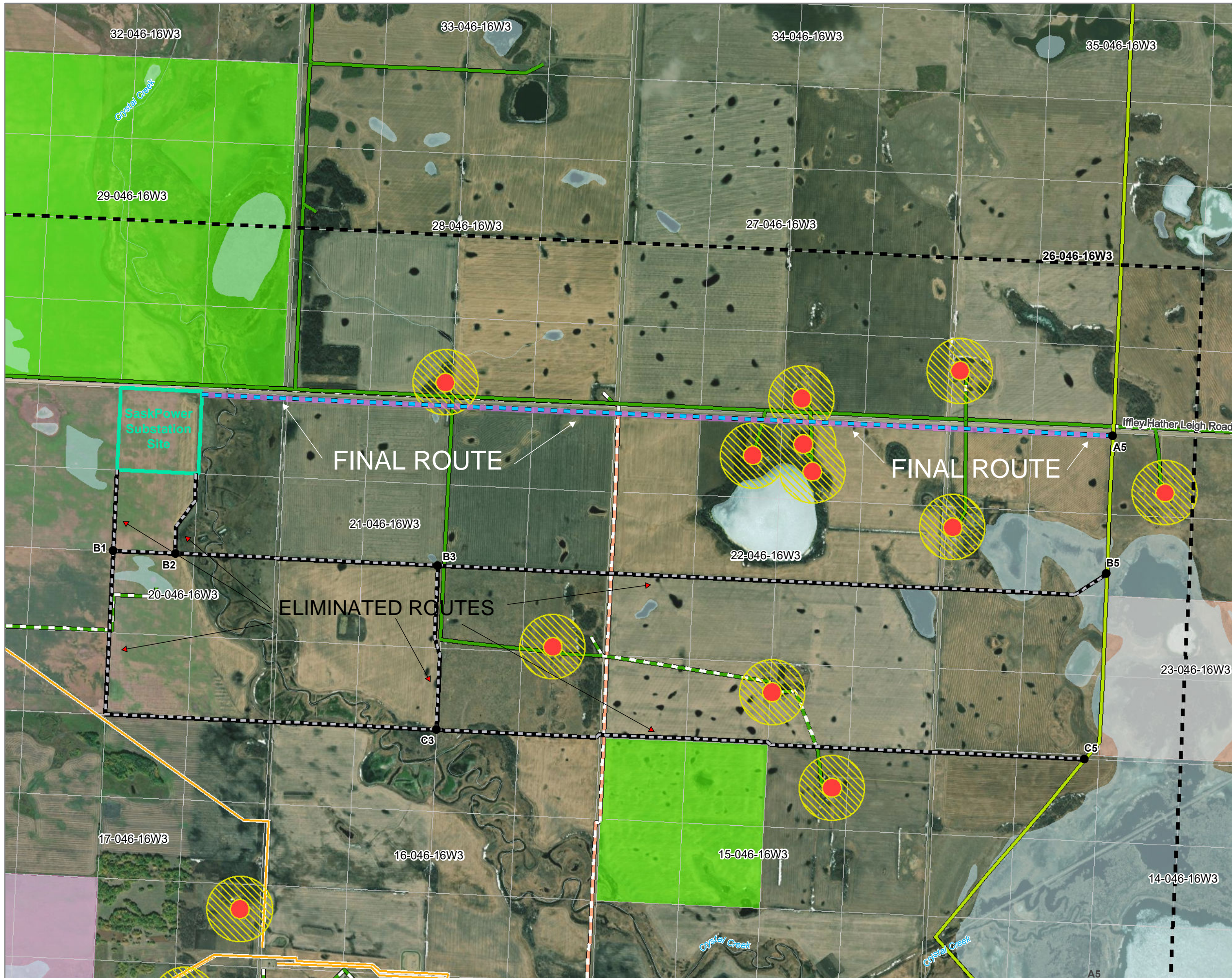


Final Route



- Point Designation
- Final Route (Proposed Centreline)
- Retired Route (Centreline)
- Potential Substation Site
- Final Route Corridor (30 m)
- Residential No-Go Buffer (46 m)
- Residential Prudent Buffer (160 m)
- Study Area
- Existing B2G 138kV Transmission Line
- Overhead Line
- Underground Line
- Pipeline
- Fibre Optic
- Watercourse
- Water Body
- Treaty Land Entitlement Parcel
- Aboriginal Land
- Conservation Easement

Imagery: Source: Esri, Maxar, Earthstar Geographics, and the GIS User Community

